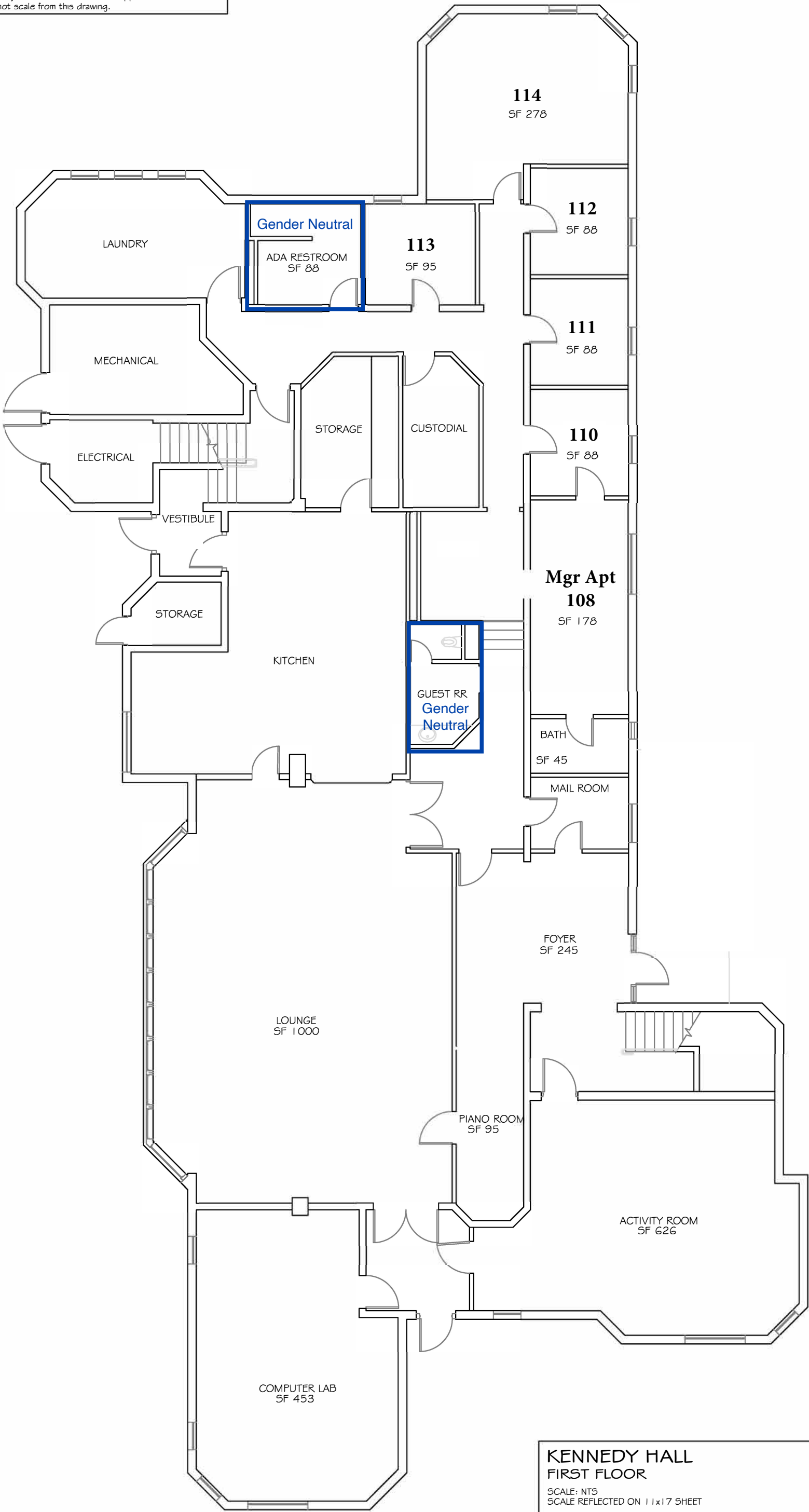


DISCLAIMER

- No part of the drawing may be reproduced or redistributed by any means, without permission from Facilities Management.
- Dimensions & square ft measurements are approximate and must be verified. Do not scale from this drawing.



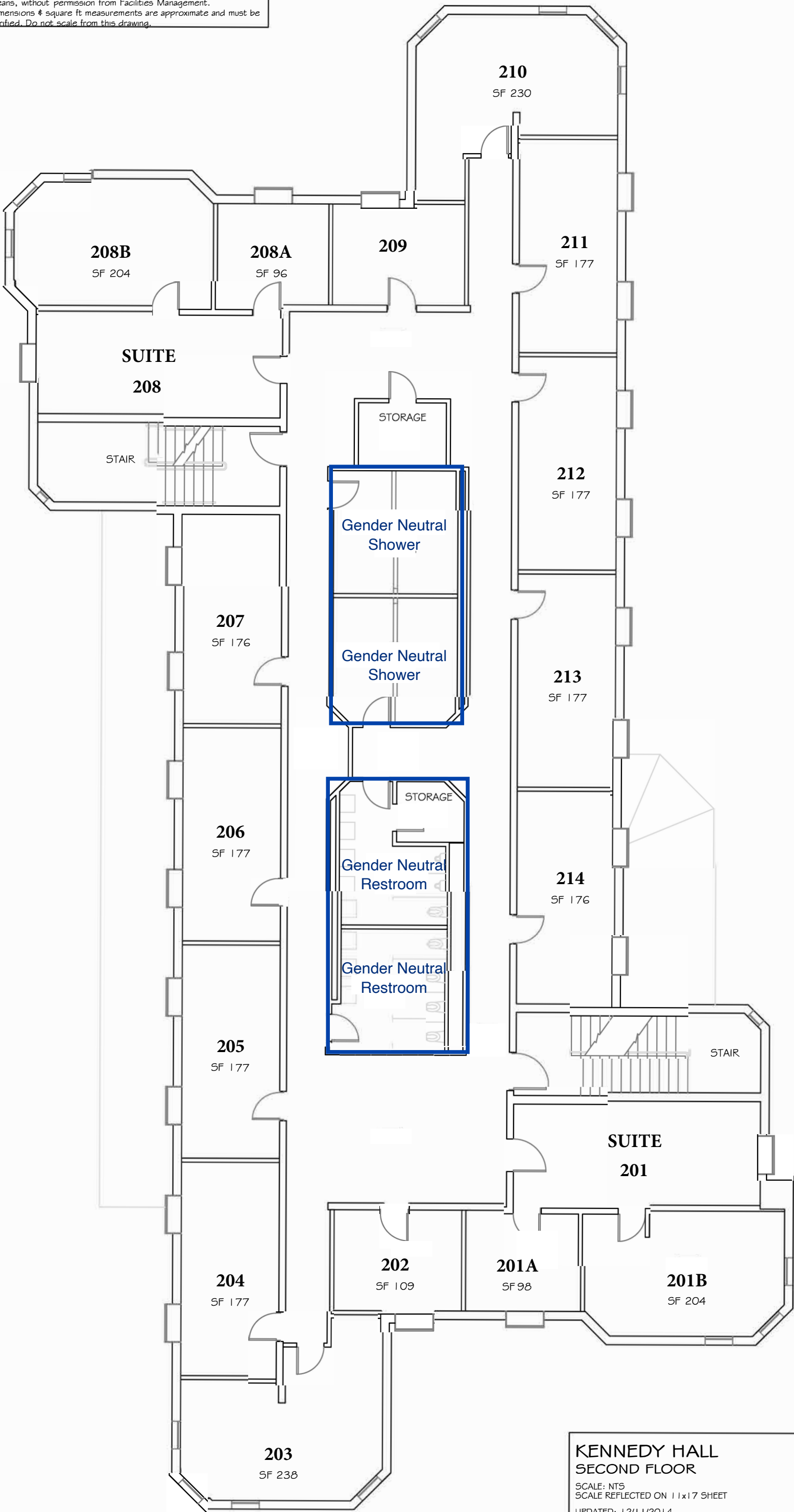
**KENNEDY HALL
FIRST FLOOR**

SCALE: NTS
SCALE REFLECTED ON 11x17 SHEET
UPDATED: 12/11/2014
CWU FACILITIES MANAGEMENT DEPARTMENT



DISCLAIMER

- No part of the drawing may be reproduced or redistributed by any means, without permission from Facilities Management.
- Dimensions & square ft measurements are approximate and must be verified. Do not scale from this drawing.



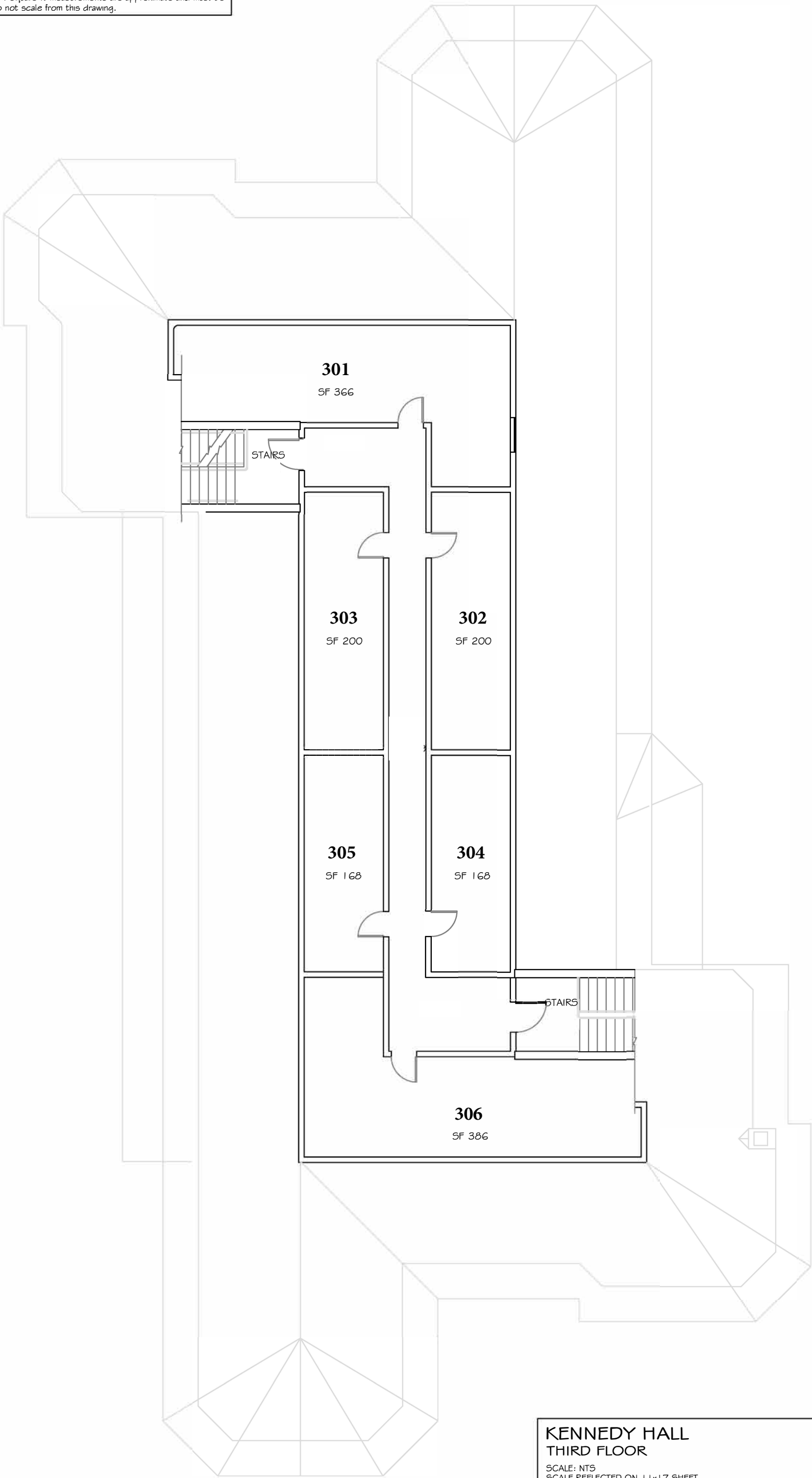
KENNEDY HALL
SECOND FLOOR

SCALE: NTS
SCALE REFLECTED ON 11x17 SHEET
UPDATED: 12/11/2014
CWU FACILITIES MANAGEMENT DEPARTMENT



DISCLAIMER

- No part of the drawing may be reproduced or redistributed by any means, without permission from Facilities Management.
- Dimensions & square ft measurements are approximate and must be verified. Do not scale from this drawing.



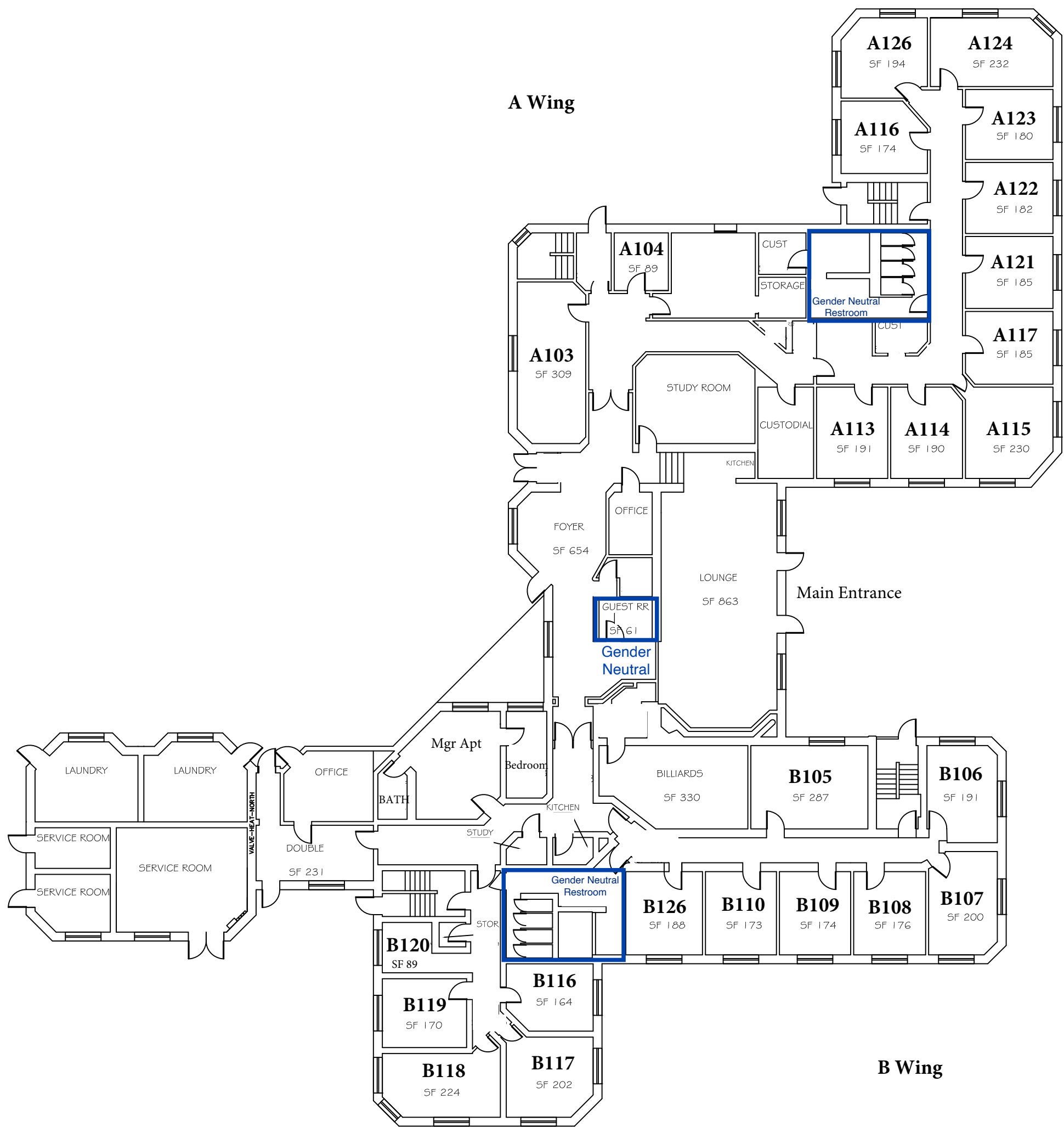
KENNEDY HALL
THIRD FLOOR

SCALE: NTS
SCALE REFLECTED ON 11x17 SHEET
UPDATED: 12/11/2014
CWU FACILITIES MANAGEMENT DEPARTMENT



DISCLAIMER

- No part of the drawing may be reproduced or redistributed by any means, without permission from Facilities Management.
- Dimensions & square ft measurements are approximate and must be verified. Do not scale from this drawing.



AL-MONTY HALL
FIRST FLOOR

SCALE: NTS
SCALE REFLECTED ON 11x17 SHEET
UPDATED: 12/11/2014
CWU FACILITIES MANAGEMENT DEPARTMENT



DISCLAIMER

- No part of the drawing may be reproduced or redistributed by any means, without permission from Facilities Management.
- Dimensions & square ft measurements are approximate and must be verified. Do not scale from this drawing.



DISCLAIMER

- No part of the drawing may be reproduced or redistributed by any means, without permission from Facilities Management.
- Dimensions & square ft measurements are approximate and must be verified. Do not scale from this drawing.

